

COLLABORATIVE ARTISTS BLOC.



SUPPORT BLACK THEATRE
See • Create • Invest

PRESENT

LIVES IN THE DUST

BY NIKKOLE SALTER

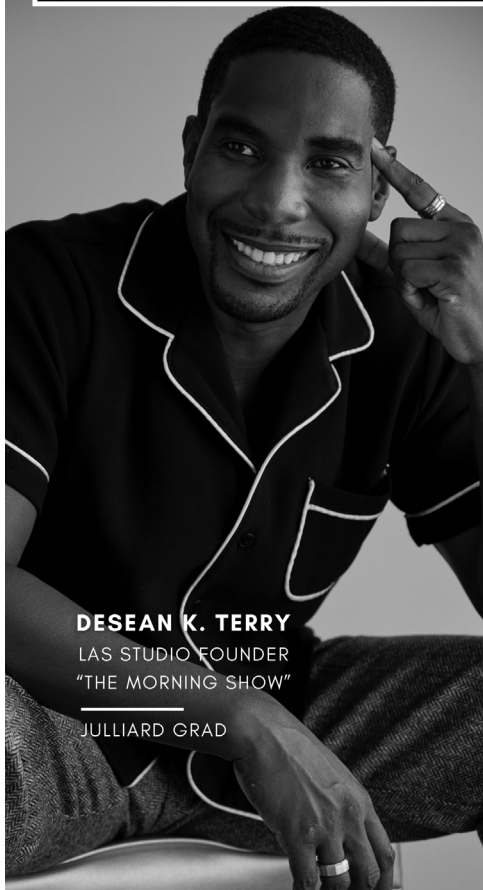
DIRECTED BY DESEAN K. TERRY





The Last Acting Studio

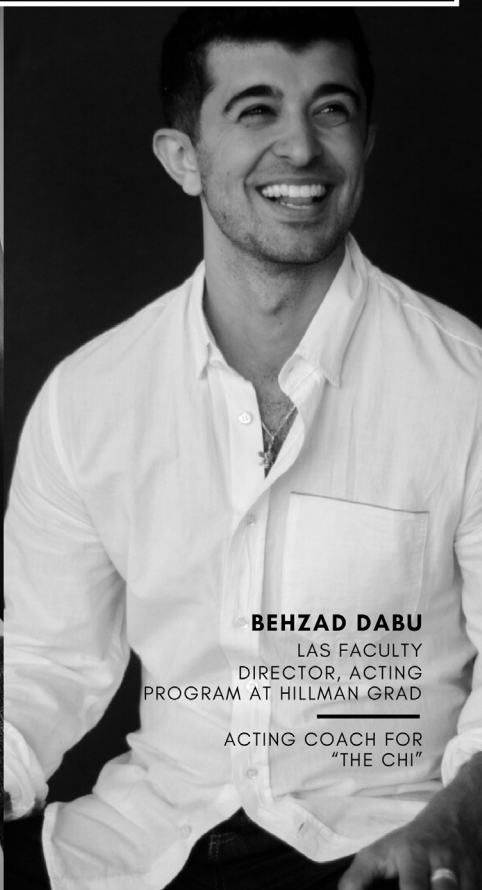
Actor Training Centered Around You



DESEAN K. TERRY

LAS STUDIO FOUNDER
"THE MORNING SHOW"

JULLIARD GRAD



BEHZAD DABU

LAS FACULTY
DIRECTOR, ACTING
PROGRAM AT HILLMAN GRAD

ACTING COACH FOR
"THE CHI"

ONE OF THE MOST PROMINENT BIPOC-LED ACTING STUDIOS IN
LOS ANGELES

thelastactingstudio.com

CO-PRODUCER

**“IN THE NAME OF THE GREATEST PEOPLE
THAT HAVE EVER TROD THIS EARTH,
I DRAW THE LINE IN THE DUST
... AND I SAY ...
SEGREGATION TODAY ...
SEGREGATION TOMORROW ...
SEGREGATION FOREVER.”**

Gov. George Wallace,
Jan 14, 1963
Inaugural Speech,
Montgomery, AL

WORDS FROM THE DIRECTOR

In the heart of Los Angeles, a powerful narrative unfolds—a city gripped by a pandemic-induced crisis and a Black theatre community, rich in talent yet profoundly underfunded compared to its white counterparts. This convergence of challenges paints the backdrop for this production.

The gifted playwright Nikkole Salter, was born and raised on the vibrant streets of Los Angeles. Despite her Pulitzer nomination, her solo work has never graced her hometown's stages. This fact alone epitomizes the struggles faced by Black artists in our community, exacerbated by the pandemic's far-reaching impacts, leaving many institutions in crisis. Yet, within this crisis, an opportunity emerges. However, it's not just the pandemic that threatens. The platforms meant to amplify these voices often fall short. Black theatres in Los Angeles struggle to secure reviews from major publications like the *LA Times*, intensifying their challenges. Moreover, most of these theatres operate without physical homes, due to some of the systemic injustices that have hindered their growth.

Enter George Wallace's iconic metaphor of the "*Lines in The Dust*," a poignant commentary on the enduring impacts of segregation. Salter's play, *Lines in The Dust*, becomes a platform where this metaphor springs to life, dissecting the essence of American segregation through its educational system.

Through its characters, the play reflects the divisions both external and internal, illuminating the intricate web of systemic inequalities seeping into the Black psyche.

What helps to make this production groundbreaking is the innovative producing model championed by Support Black Theatre. This approach empowers Black entities. This isn't merely a play; it's a call to action against a system perpetuating divisive lines in the dust.

Nikkole Salter's *Lines in The Dust* isn't solely about the external segregations—the lines etched into our cities and neighborhoods. It delves into the internal lines drawn within our minds and hearts. This production dares to explore these complexities, challenging us to confront our preconceptions and prejudices, urging us to obliterate the lines within ourselves as fervently as we seek to erase the lines in our society.

At this critical juncture, recognizing the urgency of this moment, let us rally behind *Lines in The Dust*. We must not merely spectate but actively participate. We see this production as a catalyst for change, a force to dismantle the lines that have marred our city, our theatres, and our minds for far too long. Together, let us embark on this journey of introspection, empathy, and transformation, acknowledging these lines so we can begin to erase them.

Desean K. Terry
Founding Artistic Director

Support Black Theatre (SBT) is a service organization dedicated to capacity-building Black theatres, developing Black artists, and cultivating Black audiences in Los Angeles. They are creating a support system which prioritizes artist health, organizational resilience, and radical unity amongst theatre makers and the community that they serve.

Collaborative Artists Bloc (CAB) brings dynamic and immersive performing arts experiences to communities of color. CAB explores cultural identity, promotes social change, and builds empathy to the full spectrum of individual realities. They are dedicated to bringing together artists to collaborate and create content of human and artistic value for social change. Their goal is to create art that impacts and shapes the world around us.

Lines in the Dust is the inaugural production of **Support Black Theatre's Collaborative Model**, which, with each iteration, brings together and undergirds multiple Black organizations for a bold and strategic new method of theatre making. This model implements creative solutions to both historical funding disparities and cyclical challenges faced by Black theaters, injecting cultural and financial resources into the creation of a communal, power-building ecosystem.

A GROUNDBREAKING PRODUCING MODEL

*Creating an autonomous
ecosystem of strength
and sustainability as we
generate cultural capital*

With a growing partner list of over 50 Black businesses and organizations, this groundbreaking model puts Black theatre at the center of community service, social impact, and economic growth.



COLLABORATIVE ARTISTS BLOC.



SUPPORT BLACK THEATRE

See • Create • Invest

COLLABORATIVE ARTISTS BLOC X SUPPORT BLACK THEATRE
PRESENT

LINES IN THE DUST
BY NIKKOLE SALTER
DIRECTED BY DESEAN K. TERRY

SCENIC DESIGNER
MARK MENDELSON

COSTUME DESIGNER
WENDELL C. CARMICHAEL

LIGHTING DESIGNER
DERRICK MCDANIEL

PROJECTIONS DESIGNER
SEAN CAWELTI

PROPS MASTER
ZOË CARR

SOUND DESIGNER
ALEXIS TONGUE

DRAMATURG
LINDSAY A. JENKINS

CASTING
NATASHA WARD, CSA

ASST. STAGE MANAGER
ARIELLE HIGHTOWER

ASSISTANT DIRECTOR
KAMAL BOLDEN

PRODUCTION STAGE MANAGER
RICH WONG

GRAPHIC DESIGN
CRISTIAN KRECKLER

DIALECT COACH
MEAGAN PRAHL

- LINES IN THE DUST -

PRODUCTION STAFF

SET BUILDER..... DANE BOWMAN

SET BUILDER..... JOE MCCLEAN

LIGHTING ASSISTANT.....KAI MAGEE

LIGHTING ASSISTANT.....NIALL SULCER

VIDEO PROGRAMMING ASSISTANT..... RYAN SCHWALM

SOCIAL MEDIA STRATEGIST.....ARIANA AFRADI

PUBLICIST.....JUDITH BORNE

HOUSE MANAGER.....GABY FERNANDEZ

BOX OFFICE MANAGER.....JESSICA WILLIAMS



LIVES IN THE DUST

BY
NIKKOLE SALTER

DIRECTED BY
DESEAN K. TERRY

CAST

BEVERLY LONG / DENITRA MORGAN | *Kelly Jenrette**

BEVERLY LONG / DENITRA MORGAN | *Erica Tazel**

MICHAEL DiMAGGIO | *Tony Pasqualini**

U/S BEVERLY LONG | *Tarina Pouncy**

SETTING

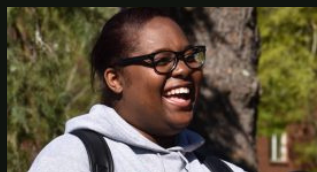
EARLY SPRING 2009
House for sale, Millburn, NJ.

OCTOBER/ NOVEMBER 2010
Millburn High School, Principal Beverly Long's Office, Millburn, NJ.
Denitra Morgan's home, Newark, NJ.
Millburn Township School Board, Millburn, NJ.

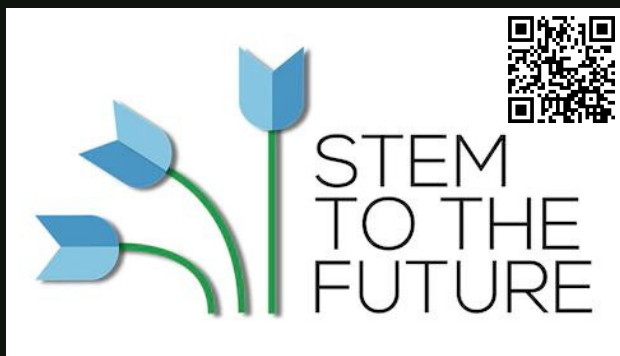
*Member of Actor's Equity Association the union of professional Actors and Stage Managers in the U.S.



100% of all program participants were accepted into, and now attend college.



**College
Access
Program**



Youth develop creativity, problem solving, and collaboration skills as they see how a variety of STEAM pathways can be used to create the future they deserve.



COMPTON GIRLS CLUB



Our mission is to provide girls and gender nonconforming from underserved communities access to resources, knowledge and skills that are not readily accessible to them in their own neighborhoods.



NONPROFIT PARTNERS

Educating Students Together

The Educating Students Together (EST) College Access Program empowers economically disadvantaged students to pursue and achieve their college education dreams. The mission of Educating Students Together is to increase the access, retention, and graduation of youth in the foster care system and from low-income communities at Historically Black Colleges and Universities to transform their lives.

STEM to the Future

STEM to the Future's mission is to inspire, motivate and support Black and brown elementary and middle school youth as they create the futures they want and deserve. Using STEAM (science, technology, engineering, art, and math), STEM to the Future supports Black and Latinx youth as they develop solutions to real world problems such as climate change, public safety, and poverty. Youth develop creativity, problem solving, and collaboration skills as they see how a variety of STEAM pathways can be used to create the future they deserve.

Compton G.IRLS Club

Compton G.IRLS Club's mission is to provide girls and gender nonconforming youth from underserved communities access to resources, knowledge and skills that are not readily accessible to them in their own neighborhoods. Compton G.IRLS Club's goal is to make these resources available and within reach, through specialty workshops, field trips, and unique experiences. With access to these resources, the members will have the building blocks for healthy self-esteem, pride, and growth.

COMPANY



Kelly Jenrette (Beverly/Denitra) | Kelly Jenrette is excited to join this dynamic cast and be back on stage in over 5 years. She has a distinguished list of credits to her name across film, television, and theatre. She earned her first Emmy® nomination for her portrayal of Annie in Season 2 Episode 4 of the critically acclaimed *The Handmaid's Tale*. Limited Theatre credits include: *The Color Purple* and *Women of Brewster Place* (Celebration Theatre), *Eclipsed* (Kirk Douglas Theatre), *Love Soul Deep* and *Love the One You're With* (A Patricia Cuffie-Jones Production), *A Christmas Carol* (Alliance Theatre), and *Rejoice* (True Colors). Limited Television credits include: *All American: Homecoming*, *This Is Us*, *Manhunt: Deadly Games*, *Grandfathered*, and *Mixed-ish*. Limited Film credits include: *Uncorked* and *All Day and A Night*. Kelly would like to thank Jesus Christ for her gift, and her husband, friends and family for their unending love and support.



Erica Tazel (Beverly/Denitra) | After graduating from NYU's Graduate Acting Program, Erica made her professional debut as Perdita in Shakespeare in the Park's production of *A Winter's Tale* opposite Oscar nominee Aunjanue Ellis and Golden Globe nominee Michael Stuhlbarg. She's also played at The Royal Shakespeare Company, The Mark Taper Forum (Ovation Award), The Continuum Company (Italy), Laguna Playhouse, The Colony Theatre (NAACP Theater Award, Best Female Lead), Hartford TheaterWorks, Playwrights Horizons, The Old Globe, Dallas Theatre Center and Arizona Theater Company. Best known for her portrayal of US Deputy Marshal Rachel Brooks on the FX Peabody Award Winning Drama *Justified* and as Matilda in the Emmy nominated *Roots*, other TV appearances include *Truth Be Told*, *All American: Homecoming*, *Lovecraft Country*, *Queen Sugar* and *The Good Fight*. Erica will next be seen as Ella Baker in National Geographic's *GENIUS: MLK/X*. Film credits include Sony's *Big George Foreman*, *The Devil You Know*, and *Runaway Island*.

COMPANY *Cont.*



Tony Pasqualini (Michael Dimaggio) |

A theatre veteran of forty-five years, Tony has performed at The Arena Stage, Williamstown Theatre Festival, Seattle Repertory Theatre, Playwrights Horizons, Philadelphia Drama Guild and Buffalo Studio Arena. Some of his favorite roles include Shylock in *The Merchant of Venice*, Prospero in *The Tempest*, Lear in *King Lear*. In Los Angeles, Tony has appeared at the South Coast Repertory playing Jim Bayless in *All My Sons*; the Fountain Theatre as Donald Rumsfeld in *What I Heard About Iraq*; The Hollywood Bowl as Van Swieten in *Amadeus*; EST LA as Harold in *Watching OJ*; Pacific Resident Theatre as Tobias in *A Delicate Balance*; and this past year, Tim in *A Great Wilderness* at Rogue Machine, and Leonato in *Much Ado About Nothing* at A Noise Within. Tony has guest starred on over 50 television shows and films. A few favorites: *Grace and Frankie*; *Mad Men*; *Modern Family*; *West Wing*, *The Office* and *Frasier*.



Tarina Pouncy (U/S Beverly, Producer) |

Tarina Pouncy enjoys sharing stories through acting, directing and producing but is no stranger to rolling up her sleeves and being a P.A. when needed. Hailing from Detroit, MI, she earned a Bachelor's degree from S.C. State Univ and an MBA from Wayne State Univ, all the while performing in plays, doing sketch comedy and even being an on-air radio personality. On stage, she has performed in *A Raisin in the Sun*, *Ma Rainey's Black Bottom* and *The Old Settler* for which she won an NAACP Theatre award. TV credits include *Star Trek: Picard*, *Queen Sugar*, *Criminal Minds* and *NCIS*. On the silver screen she can be seen in *Roman J. Israel, Esq* and the spoof comedy classic *Something Like a Business*. Podcast Series include Hallmark Media's *Crimson Hearts Collide* and Shondaland's *#Matter*. When not performing, she's flying around the world, eating ice cream and volunteering with animal and arts organizations.

COMPANY *Cont.*



Nikkole Salter (Playwright) | Los Angeles-born, OBIE Award-winning actress and writer, Nikkole Salter arrived onto the professional scene with her co-authorship and co-performance (with Danaï Gurira) of the Pulitzer Prize nominated play, *In the Continuum*. As a dramatist, Ms. Salter has written 8 full-length plays, been commissioned for full-length work by 6 institutions, been produced on 3 continents in 5 countries, and has been published in 12 international publications. Her work has appeared in over 20 Off-Broadway, regional and international theatres. She also co-founded (with NSangou Njikam) and serves as Executive Artistic Director of The Continuum Project, Inc., a non-profit organization that creates innovative artistic programming for community empowerment and enrichment. She received her BFA in theatre from Howard University, and her MFA from NYU's Graduate Acting Program. She sits on the Council of the Dramatists Guild, has served on the Board of TCG for eight years (three years as Chair), and in 2023 was chairman of Dramatists Guild Foundation Fellowship program. Ms. Salter currently serves as Chair of the Department of Theatre Arts within Howard University's Chadwick A. Boseman College of Fine Arts. www.nikkolesalter.com



Desean K. Terry (Director) | Desean is a multidisciplinary storyteller. He is the Founding Artistic Director of Collaborative Artists Bloc (CAB) and the founder of The Last Acting Studio. He is an L.A.-based director, actor, writer, and educator. As an actor, he is best known for his portrayal of Daniel Henderson in the Emmy-nominated Apple series *The Morning Show*. His directing work includes the award-winning production of *Gunsbot Medley: Part 1* by Zola Dee, produced by CAB and Rogue Machine Theatre. His other directing credits consists of *Blues for Mr. Charlie* by James Baldwin, Suzan-Lori Parks' *Imperceptible Mutabilities of the Third Kingdom*, and the recently completed independent television pilot *Perfectly Imperfect Christian*. He has also directed several festival selects and award winning short films. As a writer, his original pilot, *Charitable Gifts*, was selected as a second rounder at the Austin Film Festival and is currently in development. On the LA stages you've seen him in plays like *The Royale* (The Kirk Douglas Theatre), *Les Blancs* (Rogue Machine Theatre), *A Streetcar Named Desire* (Boston Court) and *Father Comes Home from the Wars* (Mark Taper Forum). He is a graduate of The Juilliard School. This one is dedicated to Yakira.

COMPANY *Cont.*

Mark Mendelsohn (Scenic Designer) | Mark Mendelsohn has designed over 150 musicals, plays, and live events. He is a BATCC Award winner and has earned award noms from LA Weekly, BroadwayWorld, and Theatre Bay Area. Recent shows include: *can i touch it?* (Rogue Machine), *Peg + Cat Live!* (Bay Area Children's Theatre), and a new musical workshop directed and choreographed by Jamal Sims. His work has been seen at Rubicon Theatre Co, Broadway by the Bay, Berkeley Playhouse, Diablo Theatre Co, Theater Planners, Stagedoor Manor (20 productions), and 42nd Street Moon; as well as projects for Mattel and Disney Imagineering. CalArts grad. www.markmdesigns.com

Wendell C. Carmichael (Costume Design) | Wendell C. Carmichael (he/him) is an LA-based Costume Designer/educator with previous design credits at Center Theatre Group - Mark Taper, Kirk Douglas, Laguna Playhouse, Geffen Playhouse, Ebony Repertory Theatre, Collaborative Artist Bloc, Lobby Theatre, Antaeus Theatre Company, Boston Court Theatre, Kansas City Repertory Theatre, Rogue Machine, Matrix Theatre, Southcoast Repertory Theatre, La Mirada Theatre, Wherehouse Theatre, Skylight Theatre Company, Lower Depth Theatre, Chance Theater Company, and others. University and Colleges APU, USC, UCLA, University of Pomona, Chapman College and University of Lavern productions. Three time LA Critic's Choice nominee, 2018 Stage Raw winner - Costume Design. Three-time L.A. Ovation Award nominee. 2017 Orange County's Best Costume Designs. 2015 NAACP Theatre Award winner. Member of Local 768. His work can be viewed on social media @WynningzbyWendell.

Derrick McDaniel (Lighting Design) | Derrick McDaniel has been working in the live theater arena for over 25 years, both in Los Angeles and New York. From Romeo and Juliet to Guys and Dolls, Derrick has designed lighting for many plays, musicals and corporate and private events. A few of his lighting credits include *Mercy Seat* (2012 LA Weekly Awards Winner) at the Inside the Ford Theater, *According To The Chorus* at the Road Theater - and many, many other productions. Recently, Derrick designed *Seven Guitars* at the A Noise Within Theatre, *An Octoroon*

at the Fountain Theatre, and *Tornado*, at Actors Coop. He has garnered many nominations and awards for his lighting work. The Scenic Award Winner for "Lighting Designer of the Year-2022" and a nomination for the Desert Theater Awards Best Lighting Designer for *The Mountaintop* are his latest accomplishments. Derrick is the current Lighting Designer at Caltech. He would like to thank the staff and officers of CAB for providing the opportunity to create. Luckily, the theater spirits have allowed us to create live theater, again.

Alexis Tongue (Sound Design) | Alexis Tongue is a Sound Designer and Editor living in Los Angeles. Coming from UCLA's School of Theater, Film and Television, she works in a variety of genres and styles, using music as a significant component of her designs. She is passionate about acquiring new skills and techniques in the evolving world of picture and sound. Alexis comes from a diverse range of experience from short films to plays to music videos. Her goal when approaching each project is to understand the narrative in order to create tailored sounds aimed to engulf each person into the narrative and evoke emotions and memories.

Sean Cawelti (Projection Design) | Sean Cawelti (he/ they) is a creative director, puppet/video designer and creator of immersive and site-specific experiences. Sean is a graduate from the University of California, Irvine, with honors in directing and studied puppetry at Tisch School of the Arts at NYU. As founding artistic director of Rogue Artists Ensemble (Los Angeles), Sean has won awards for their work as a designer, director and playwright, including a UNIMA Citation of Excellence and the Sherwood Award from Center Theater Group. Sean's work has been seen at the Getty Villa, SCR, Segerstrom Center for the Arts, Cornerstone Theater Company, Chicago Opera Theater, LA Theatre Works, Geffen Playhouse, Long Beach Opera, Imago Theatre (Portland), New York City Opera, Center for Puppetry Arts (Atlanta) and the Kanye West Yeezus world tour. Cawelti is a member of United Scenic Artists Local 829. www.seancawelti.com www.rogueartists.org

COMPANY *Cont.*

Zoë Carr (Props Master) | Zoë Carr is always eager to tell a good story. She graduated in May with majors in Theater and Philosophy from Loyola Marymount, where she became well acquainted with all sides of theater: acting, set-construction, design, running crew, lighting and sound craft. At LMU, she spent 2 years as the Technical Director of the student-run Del Rey Players; and studied acting in Bonn, Germany with mentors from the Moscow Art Theater, Zagreb Academy of Dramatic Arts and Michael Tschechow Studio Berlin. Since graduating, Zoë served as the props-master for the world premiere of *Accommodation* (Odyssey Theater and 3Gems Productions), appeared as Banquo in *Macbeth* (Shakespeare on the Bluff) and Cecily Cardew in *The Importance of Being Earnest* (Boise Bard Players). As soon as she read *Lines in the Dust*, she knew she had to be a part of bringing this story to life. Huge thanks to the great artists of Collaborative Artists Bloc and Support Black Theatre!

Lindsay A. Jenkins (Dramaturgy) | Lindsay A. Jenkins (L.J.) is a dramaturg and educator based in Los Angeles by way of Dallas, TX. Her area of specialty is Black Performance Heritage, connecting past performances to contemporary experiences. L.J. loves supporting the development of new work, most recently in residence at the Ojai Playwrights Conference. Other dramaturgical work includes *The First Deep Breath* at Geffen Playhouse and *Twilight Los Angeles, 1992* at the Mark Taper Forum. L.J. began her career as a middle school teacher and is currently faculty at Pomona College. She is the Founder of Maroon Arts and Culture.

Rich Wong (Production Stage Manager) | Rich (he/him) is a graduate of UCLA where he earned a BA in film and television. His theatre credits include *Company of Wayward Saints*, *Reservations For Two*, *Gruesome Hotel*, *Measure For Measure*, *Come Get Maggie*, *Blue*, *The Shadow*, and *The Real Black Swann: Confessions of America's First Black Drag Queen*. When he's not stage managing, you may find him forcing blood from a stone (or what he likes to call writing). He's excited to be working with Collaborative Artists Bloc and Support Black Theatre on this production.

Kamal Bolden (Assistant Director) | Kamal is beyond excited to make his assistant directorial debut with CAB. Regional: Troy in *Fences* (JEFF Award-Best Actor, American Blues Theater), *The Bluest Eye* (A Noise Within), *Immediate Family* (Taper Forum), Hero in *Father Comes Home From The Wars* (Goodman Theatre). Off-Broadway: AUDELCO Award-Best Actor in *Reparations* (Billie Holiday Theatre), *The Opponent* (59E59St), *Hands Up* (National Black Theater). Television: Series Regular-*The Endgame*, *61st Street*, *Chicago Fire*, *Insecure*, *The Resident*, *Law & Order*, *Rosewood*, *NCIS*, *Major Crimes*, *Betrayal*, *Low Winter Sun*, *Boss*, *Lights Out*. Film: *The Night Before*, *Ravers*, *Keys to the City*, *Elvis & Nixon*, *Vacation Friends*.

Arielle Hightower (Assistant Stage Manager) | Arielle is honored to be working with Collaborative Artists Bloc and Support Black Theatre on such a wonderful production. She is a recent graduate from California State University, Fullerton with a B.A. in Theatre Arts with an Emphasis in Stage Management. Production Credits: *The Bluest Eye* at A Noise Within Theatre; *Almost, Maine*, *She Kills Monsters*, *Cabaret* at CSUF College of the Arts; *REVERB TAP COMPANY* at Old Town Temecula Community Theater. She would like to thank God and her mother for their support.

Meagan Prah (Dialect Coach) | Meagan is grateful to be working with Collaborative Artists Bloc on *Lines in the Dust*. She is a voice and dialect coach, intimacy choreographer and professor of theater at Loyola Marymount University. She specializes in helping actors make brave choices both vocally and physically while honoring their boundaries. Congratulations to the whole team!

Ariana Afradi (Social Media Strategist) | Ariana is a recent graduate of the University of Southern California's BFA Acting for Stage, Screen, and New Media program. Soon after graduating Ariana founded her own social media agency, and is very excited to join the Collaborative Artist's Bloc team for *Lines in the Dust*!

COMPANY *Cont.*

Dr. Ariane Helou (Producer) | Ariane Helou is a Lebanese American dramaturg and theater scholar, and a CAB company member (Dramaturg/Producer) since 2019. In addition to her producing work with CAB, Ariane has been a dramaturg at Santa Cruz Shakespeare for 10 seasons; other production dramaturgy includes LA Opera (*The Anonymous Lover*), Rogue Machine Theatre (*Gunshot Medley: Part 1*) and the Jewel Theatre Company (*Master Class*). She is a former faculty member at UCLA and UC Santa Cruz and the co-editor, with Julia R. Lupton, of *Romeo and Juliet, Adaptation and the Arts* (The Arden Shakespeare / Bloomsbury, 2022). Ariane currently works as a grant writer for Caltech's Beckman Institute. Learn more at ArianeHelou.com.

Keiana Richàrd-Bartolome (Producer) | Keiana Richàrd-Bartolome received her MFA from The University of California, San Diego. Some theatre credits include Lincoln Center's Tony-nominated production of *Dividing the Estate*, *The McCarter Theatre's Eclipsed*, and Center Theatre Group's *The Trip To Bountiful*. Some TV./Film projects include *Mid-City Blue*, Adult Swim's *Delocated*, and NBC's *The Player*. She is currently serving as Co-Artistic Director for Collaborative Artists Bloc where she produces, directs, and performs in CAB's programming. She has directed for theatre companies and universities such as Celebration Theatre, Rogue Artists Ensemble Lab 2020, Ammo, IAMA, Rogue Machine, Pomona College, and LMU.

Billy Baker (Producer) | Billy Baker is proud to be doing another production with Collaborative Artists Bloc. He has been with CAB since 2018, working on *American Saga: Gunshot Medley*, & has produced several mixed-media CAB projects including *The Covid Effect*. He is a graduate of Pepperdine University and a member of The Road Theatre Company where he will be appearing onstage in Steve Yockey's *Mercury* in February. Thank you to CAB & Support Black Theatre for putting together such a beautiful team to be a part of.

Natasha Ward, CSA (Casting Director/Producer) | Natasha Ward, CSA, a prominent Hollywood figure, excels in casting, producing, and acting coaching with over 150 credits in film, TV, and more. Notable work includes Audible's *The Motherlode & Technically Speaking* podcast and successful shows like *G.R.I.T.S.* and *Kold X Windy* for AMC/ALLBLK/WETv. Her production achievements encompass award-winning projects like *Kicks*, *Fels High*, *Brotherly Love*, *9RIDES*, and *A Boy. A Girl. A Dream*. Natasha collaborates with industry stars and organizations, extending her influence beyond the screen. She also actively supports and mentors actors & filmmakers, demonstrating her significant impact in the entertainment world.

Russell Andrews

and



StageWalkers

CONGRATULATES SUPPORT BLACK THEATRE
AND THE CAST AND CREW OF

NIKKOLE SALTER'S
LINES IN THE DUST

SPECIAL ACKNOWLEDGEMENTS

AMAZING GRACE CONSERVATORY
JUDITH BORNE
TYRONE DAVIS
JOSEPH STERN
ROGUE MACHINE THEATRE
AMBER WYNN
BAILEY PASCH
OUTSIDE IN THEATRE
BRUCE A. LEMON, JR.
THE LAST ACTING STUDIO
SOPHIA MAGNONE

This activity is funded in part by the California Arts Council, a state agency.



Collaborative Artists Bloc is supported by the LA County Department of Arts and Culture as part of Creative Recovery LA, an initiative funded by the American Rescue Plan.

Collaborative Artists Bloc is supported by the LA County Department of Arts and Culture as part of LA County Performing Arts Recovery Grant.



SUPPORT BLACK THEATRE WOULD LIKE TO ACKNOWLEDGE
THE FOLLOWING GENEROUS PARTNERS

THE BLACK SEED BLACK  **QUITY** collective



SHOES

Written By
Russell Andrews

Illustrated By
Victor Onyenobi



SHOES

A CHILDREN'S BOOK
BY RUSSELL ANDREWS
WWW.ARUSSELLANDREWS/SHOES

SUPPORT BLACK THEATRE

See • Create • Invest

August Wilson new voices

National Monologue Competition

LOS ANGELES 2024

Support Black Theatre is proud to be the Los Angeles home for the 2024 national **August Wilson New Voices** competition!

Learn More Here



In partnership with Occidental College and Ebony Repertory Theatre:

OXY
Occidental
College



www.SupportBlackTheatre.org